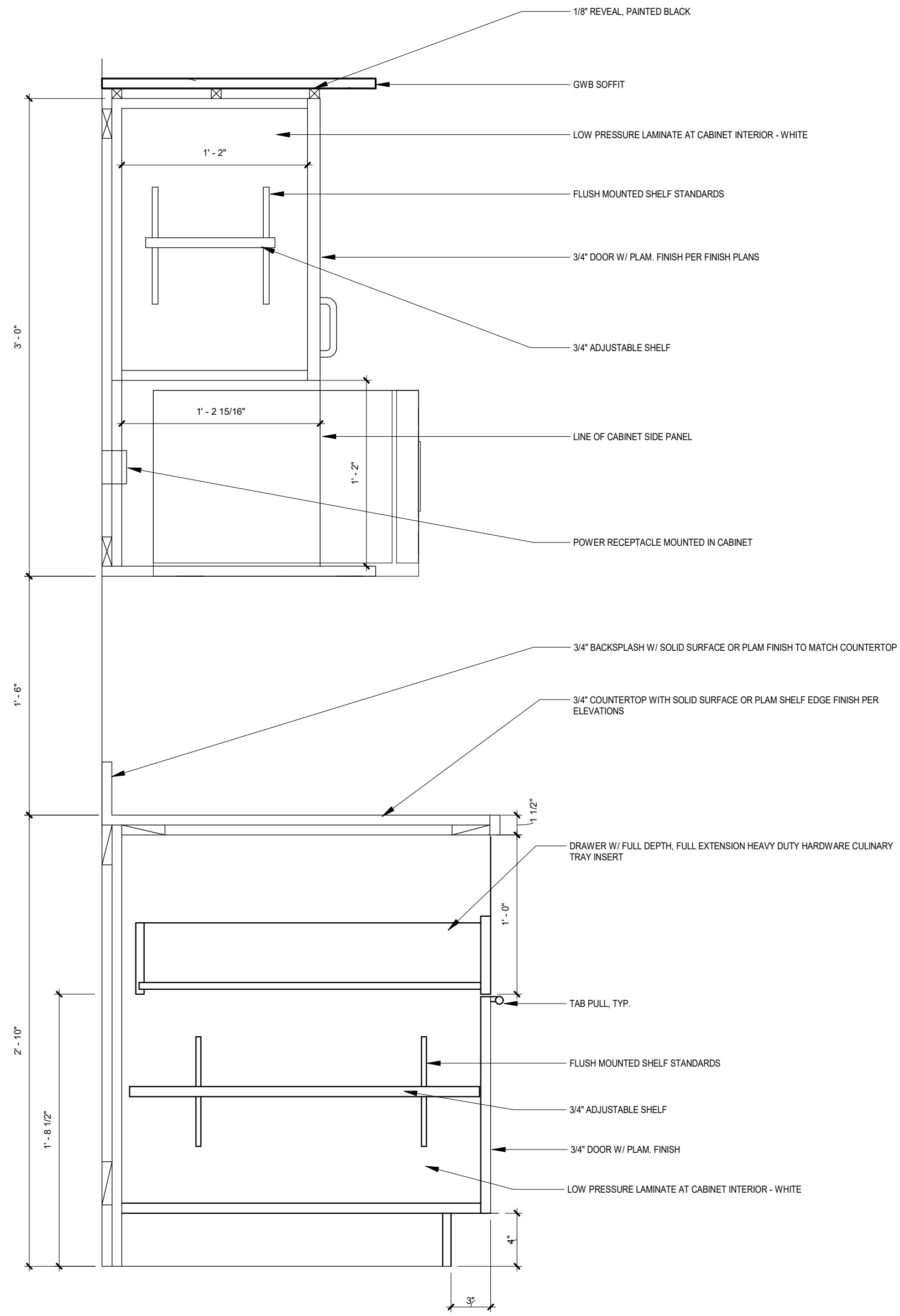
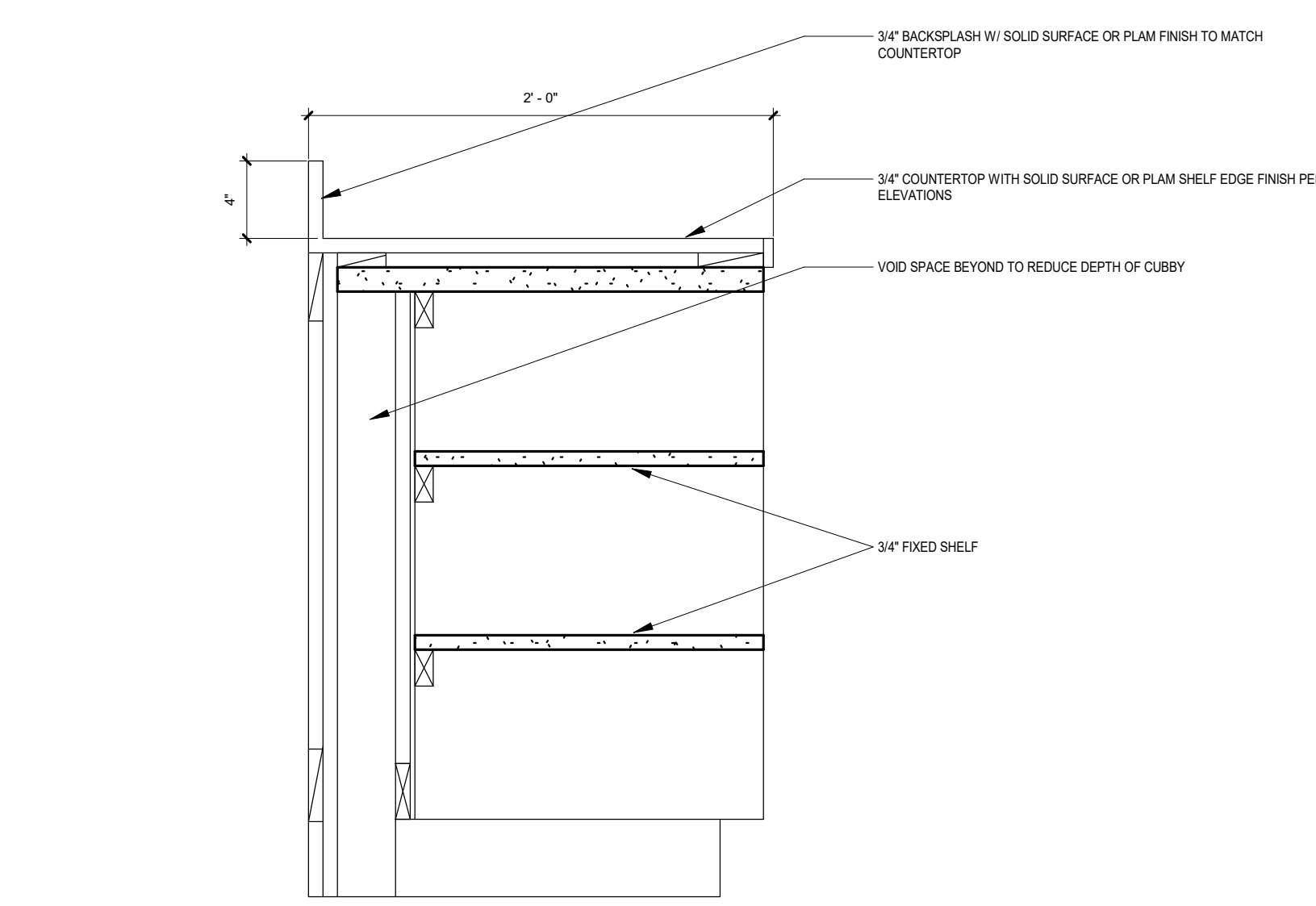


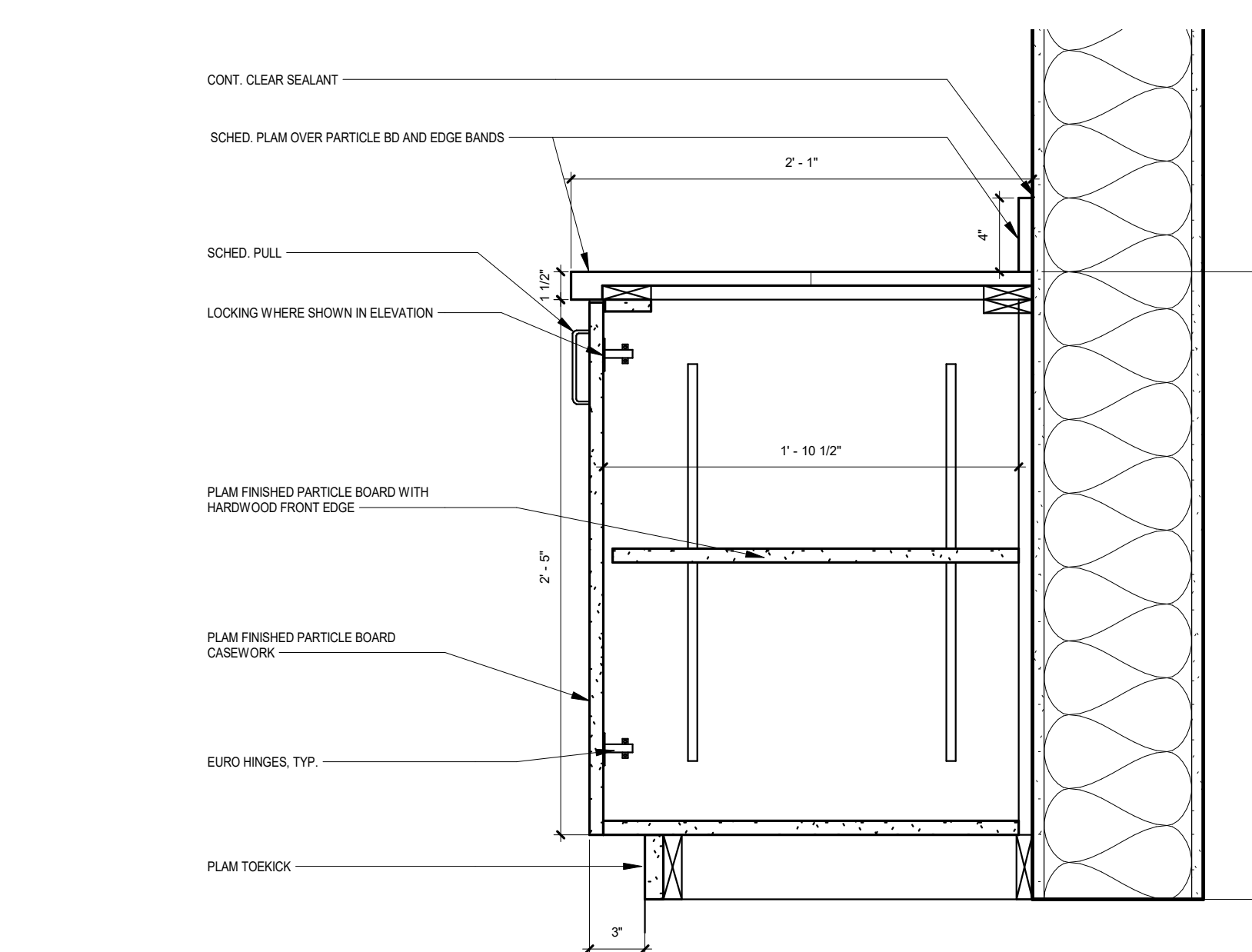
1 CASEWORK DETAIL - TRASH AND MICROWAVE
A5.02 1 1/2" = 1'-0"



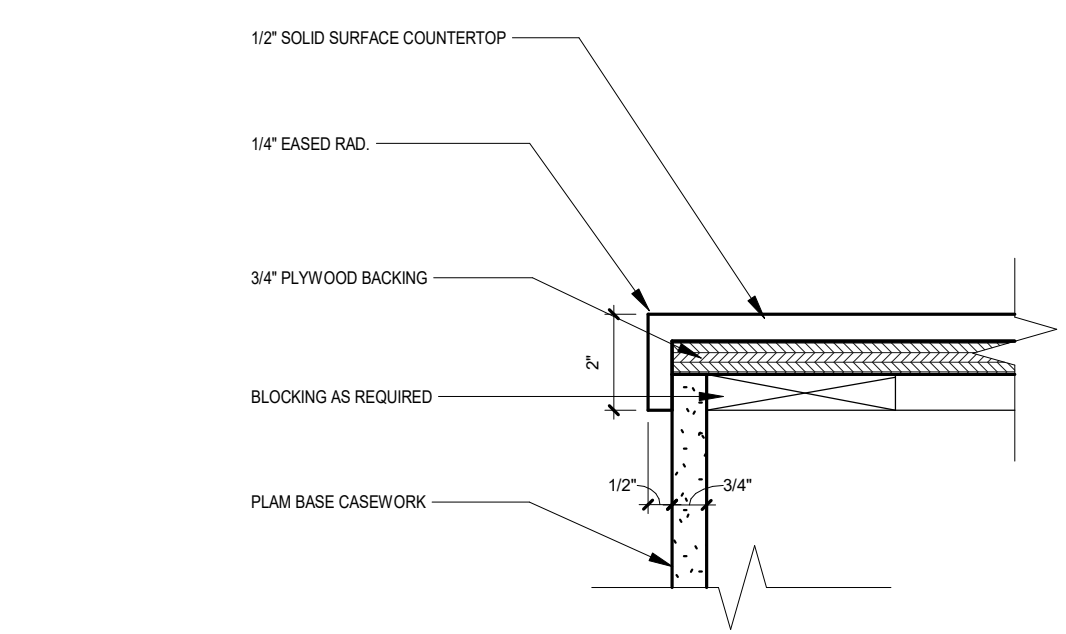
3 CASEWORK DETAIL - DRAWER AND MICROWAVE
A5.02 1 1/2" = 1'-0"



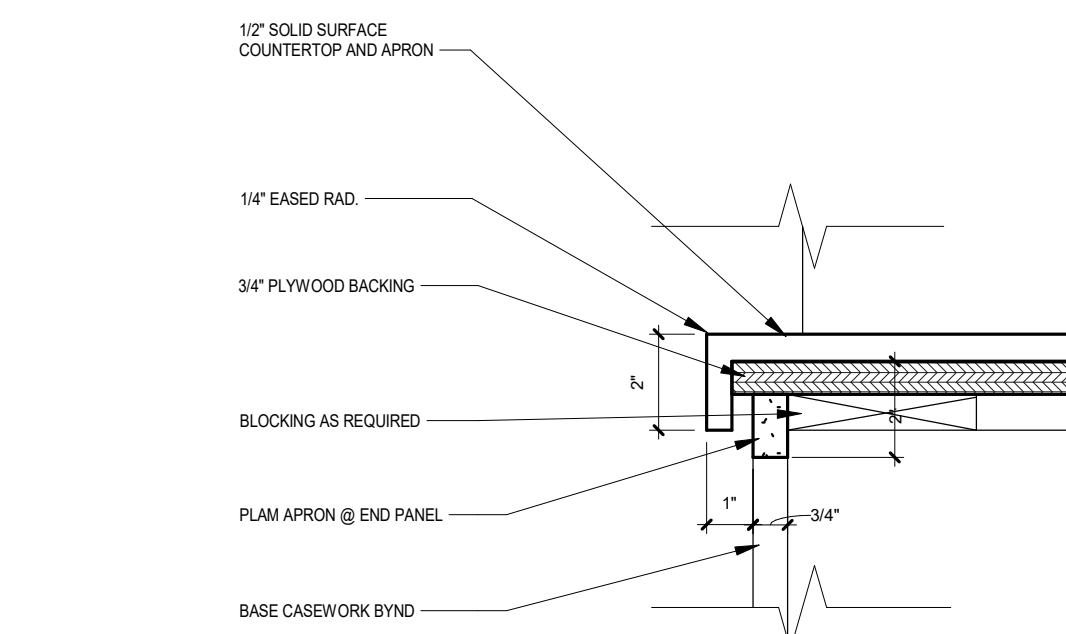
2 CUBBIES SECTION DETAIL
A5.02 1 1/2" = 1'-0"



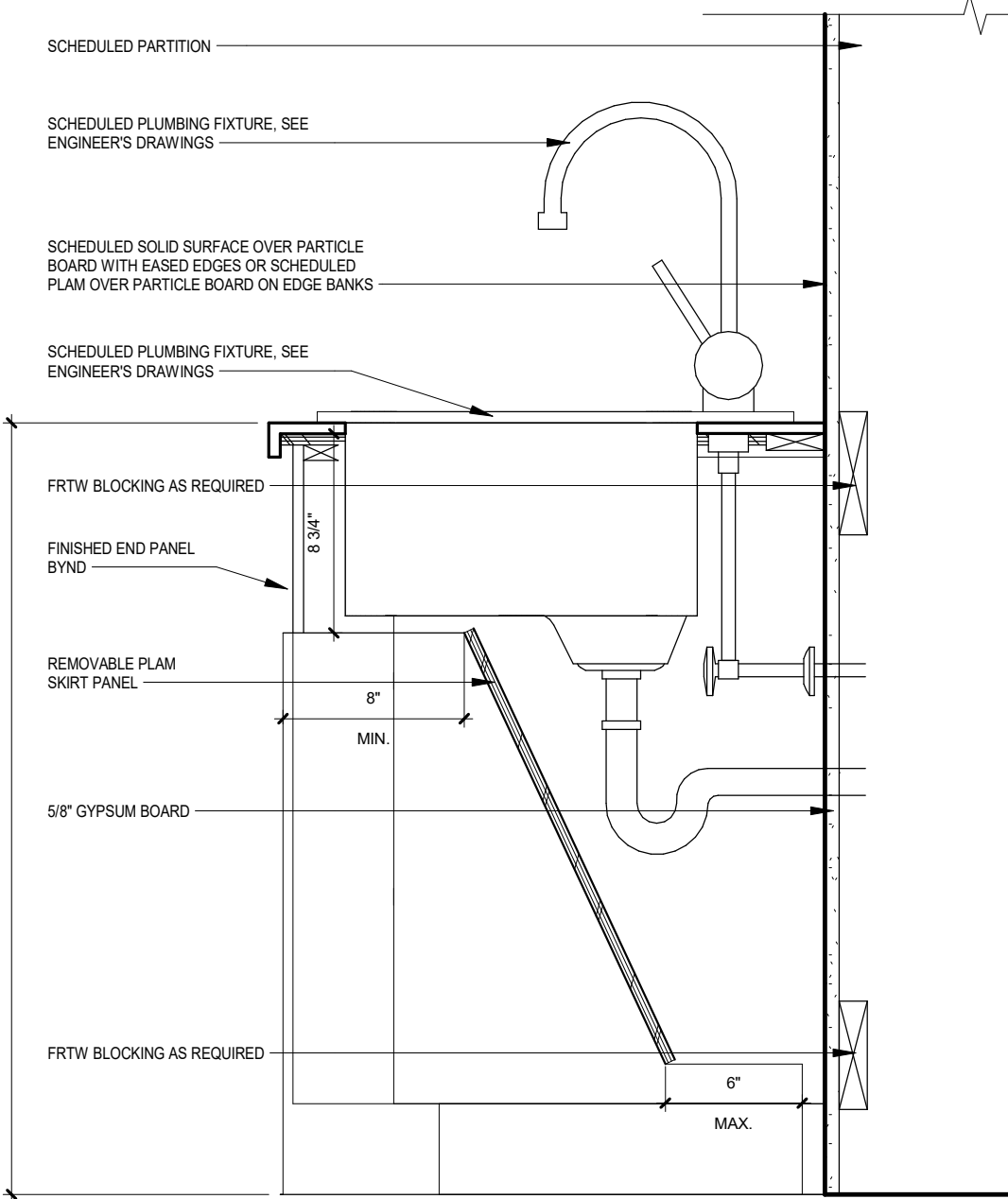
4 BASE CABINET SECTION
A5.02 1 1/2" = 1'-0"



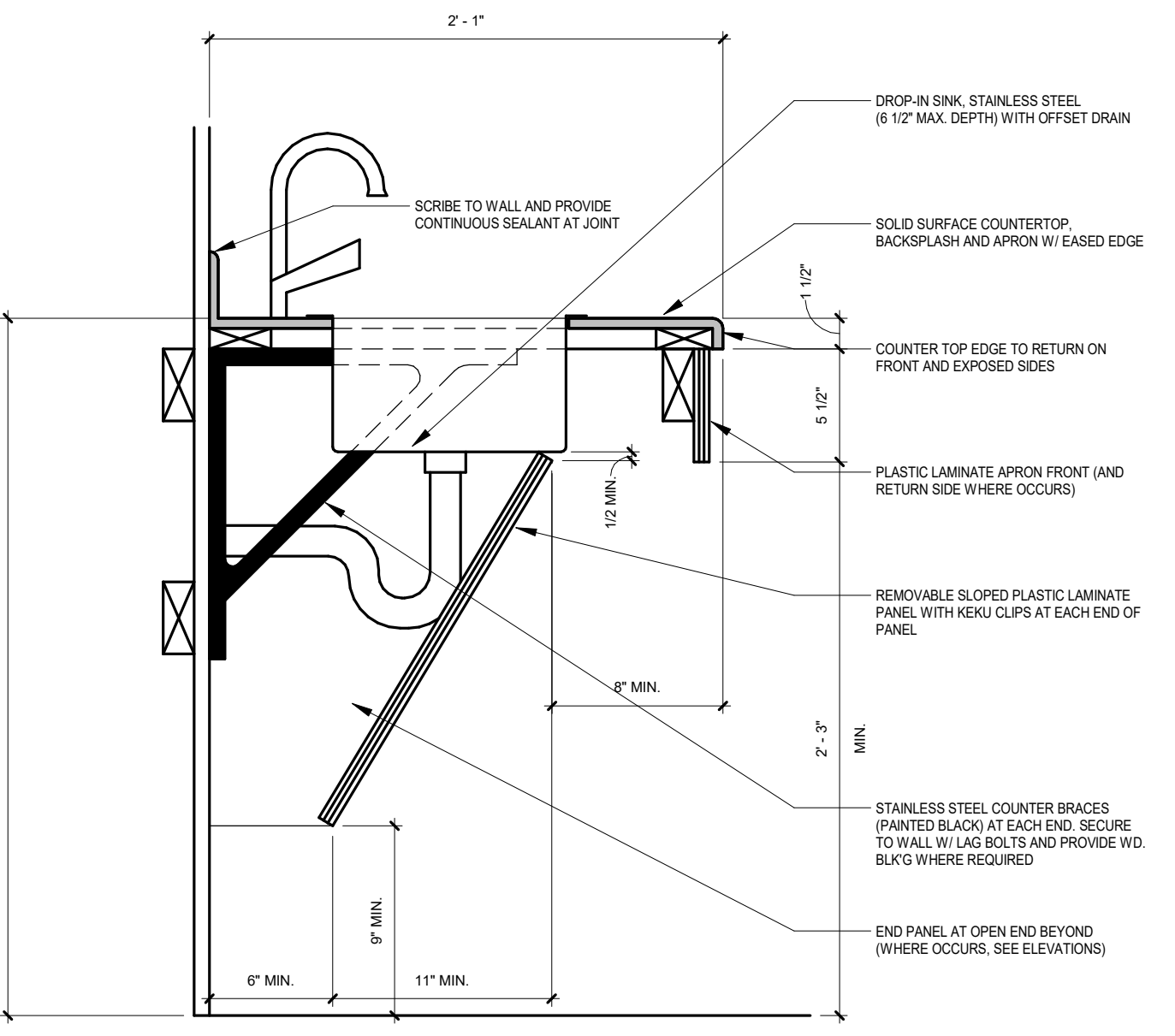
5 COUNTER EDGE RETURN
A5.02 3" = 1'-0"



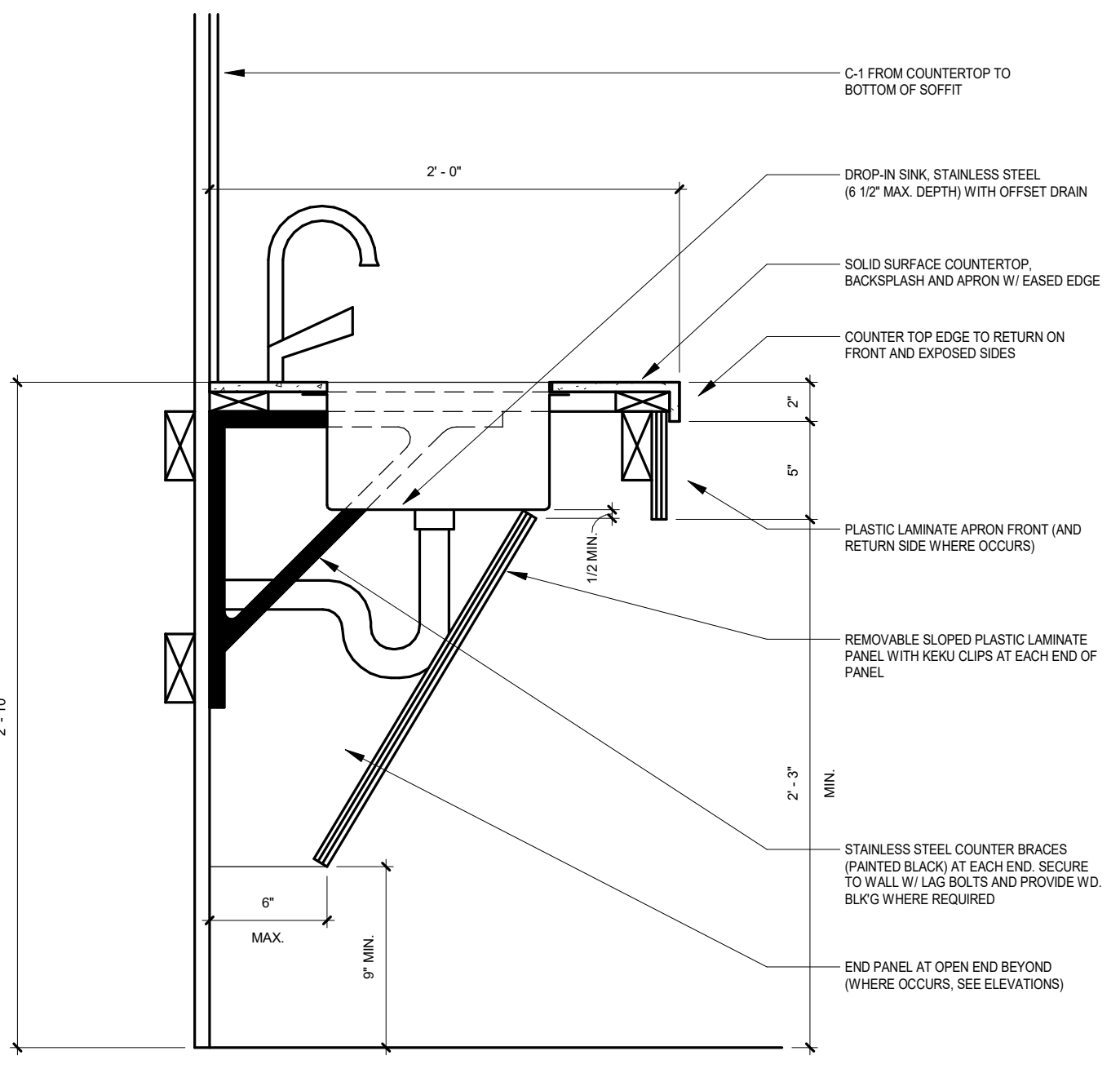
6 COUNTER EDGE
A5.02 3" = 1'-0"



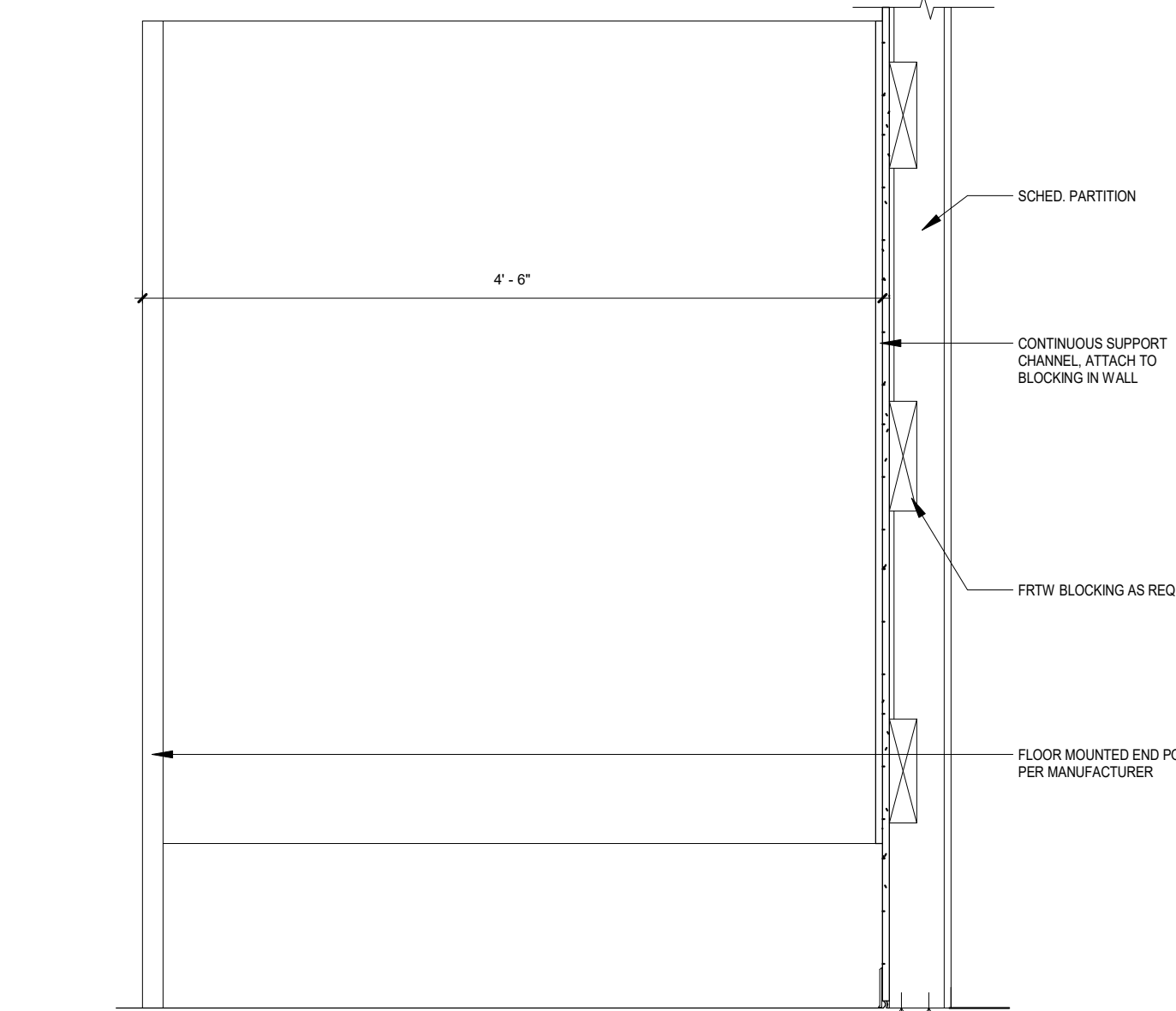
7 BREAK ROOM CABINET AND SINK SECTION
A5.02 1 1/2" = 1'-0"



8 MOTHERS ROOM - COUNTERTOP
A5.02 1 1/2" = 1'-0"



9 COUNTERTOP DETAIL - BREAK ROOM SINK
A5.02 1 1/2" = 1'-0"



10 TYPICAL LOCKER DIVIDER ELEVATION
A5.02 1" = 1'-0"